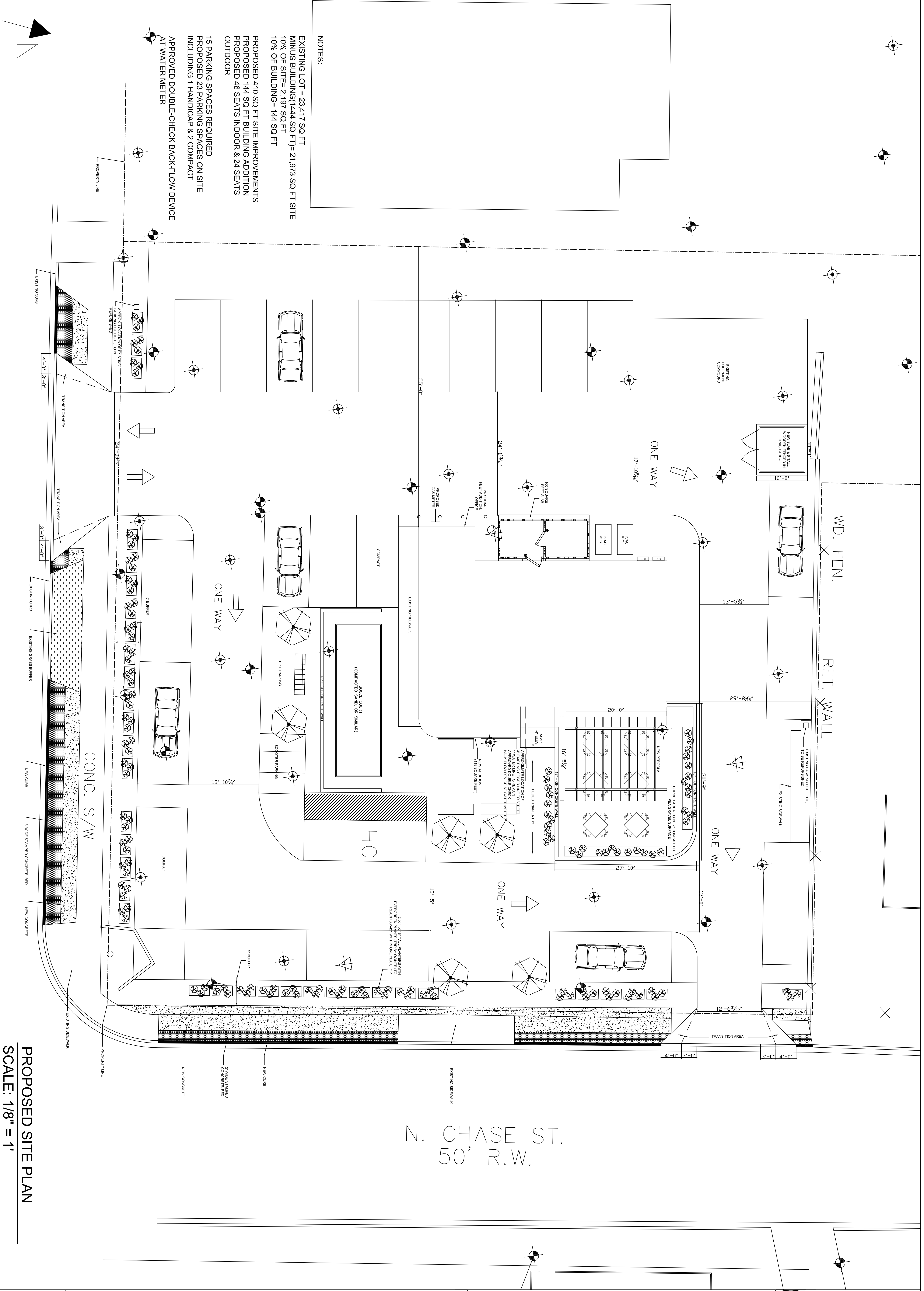


PROPOSED SITE PLAN  
SCALE: 1/8" = 1'

NOTES:  
 EXISTING LOT = 23,417 SQ. FT.  
 MINUS BUILDING(1444 SQ. FT.) = 21,973 SQ. FT. SITE  
 10% OF SITE = 2,197 SQ. FT.  
 10% OF BUILDING = 144 SQ. FT.  
 PROPOSED 410 SQ. FT. SITE IMPROVEMENTS  
 PROPOSED 144 SQ. FT. BUILDING ADDITION  
 PROPOSED 46 SEATS INDOOR & 24 SEATS  
 OUTDOOR  
 15 PARKING SPACES REQUIRED  
 PROPOSED 23 PARKING SPACES ON SITE  
 INCLUDING 1 HANDICAP & 2 COMPACT  
 APPROVED DOUBLE-CHECK BACK-FLOW DEVICE  
 AT WATER METER



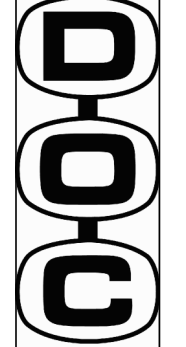
N. CHASE ST.  
50' R.W.

**PROPOSED SITE PLAN**

This drawing is the property of D.O.C. Unlimited, Inc. It is only to be used for the project and site specifically identified herein. It should not be reproduced or copied in whole or in part without the expressed written consent of D.O.C. Unlimited, Inc.

**HEIRLOOM CAFE & FRESH MARKET**

815 NORTH CHASE STREET  
ATHENS, GA 30601



D.O.C. UNLIMITED, INC.  
 585 BARBER STREET  
 ATHENS, GA. 30601  
 phone: 706-369-8689  
 fax: 706-613-8826  
 info@docunlimited.com

SHEET:  
A-105(P)  
DATE:  
12-7-10